

SERVICE BULLETIN

Checking for correct engine type plate on ROTAX® Engine Type 912 ULS

ATA System: 00-00-00 General

MANDATORY

1) Planning information

To obtain satisfactory results, procedures specified in this publication must be accomplished with accepted methods in accordance with prevailing legal regulations.

BRP-Rotax GmbH & Co KG cannot accept any responsibility for the quality of work performed in accomplishing the requirements of this publication.

1.1) Applicability

All versions of ROTAX® engine types:

Engine type	Serial number
912 ULS	from S/N 9570001 up to S/N 9570358 inclusive

1.2) Concurrent ASB/SB/SI and SL

None.

1.3) Reason

A field report has indicated an engine with an incorrect type plate. All engines within the range listed in section 1.1 "Applicability" must be inspected for correct engine type plate.

1.4) Subject

Checking for correct engine type plate on ROTAX® Engine Type 912 ULS.

1.5) Compliance

- At the next engine maintenance event, but at the latest after 25 h of engine operating time, check and if necessary, replace the engine type plate on engines listed in section 1.1. This must be done in accordance with the following instructions in chapter 3, but at the latest by 31st December, 2018.

1.6) Approval

None.

SERVICE BULLETIN

1.7) Labor time and credit

A labor credit will be provided for work performed by a technician with current applicable iRMT rating.

Work performed	iRMT rating required	Labor credit
Inspection as per chapter 3.	iRMT Maintenance Heavy	0.6 hours
Replacement and re-assembly as per chapter 3.	iRMT Maintenance Heavy	1 hour

To apply for labor credit, contact your ROTAX® Authorized Distributor or their independent Service Centers.

1.8) Mass data

Change of weight - - - none.

Moment of inertia - - - unaffected.

1.9) Electrical load data

No change.

1.10) Software modifications

No change.

1.11) References

None.

1.12) Other Publications affected

None.

1.13) Interchangeability of parts

- All parts are interchangeable

2) Material Information

2.1) Material

Price and availability will be provided on request by ROTAX® Authorized Distributors or their independent Service Centers.

2.2) Company support information

- Any possible support by BRP-Rotax will be provided on request by ROTAX® Authorized Distributors or their independent Service Centers.

2.3) Material requirement and credit per engine

Fig.no.	Part no.	Qty/ engine	Description	Application
2-7	249071	2	Grooved pin	Engine type plate
1-7	n.a.*	1	Engine type plate*	

* To be supplied by BRP-Rotax upon confirmation of an incorrect engine type plate and return of engine type plate to BRP-Rotax.

d06580.fm

SERVICE BULLETIN

2.4) Material requirement and credit per spare part

None.

2.5) Rework of parts

None.

2.6) Special tooling/lubricants- /adhesives- /sealing compounds

None.

3) Accomplishment/Instructions

- ROTAX reserves the right to make any amendments to existing documents, which might become necessary due to this standardization, at the time of next revision or issue.

**Accomplish-
ment**

All measures must be implemented and confirmed by at least one of the following persons or organizations:

- ROTAX® - Authorized Distributors or their independent Service Centers
- Persons with approved qualifications for the corresponding engine types. Only authorized persons (iRMT, Level Heavy Maintenance) are entitled to carry out this work.
- Persons with type-specific training

NOTE: All work has to be performed in accordance with the relevant Maintenance Manual.

Safety notice



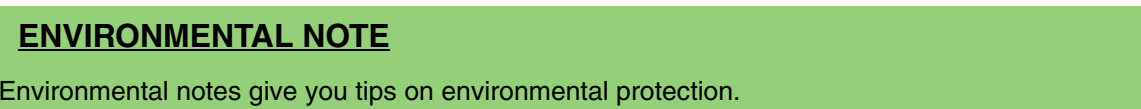
Identifies an instruction which, if not followed, may cause serious injury or even fatal injury.



Identifies an instruction which, if not followed, may cause minor or moderate injury.



Identifies an instruction which, if not followed, may severely damage the engine or could void any warranty.



NOTE: Indicates supplementary information which may be needed to fully complete or understand an instruction.

d06580.fm

SERVICE BULLETIN

3.1) Engine type plate inspection

The engine type plate is located on top of the ignition housing. A sample of an incorrect engine type plate shown in Fig. 1 below (A sample of a correct engine type plate is shown in Fig. 5).



- 1 "Type" must be **ROTAX 912 ULS**
- 2 "S/N" - Serial number
- 3 T/O-Power (max. 5 Min.) must be **73.5 kW**

Fig. 1

10105

Example of incorrect engine type plate

If the engine's type plate shows correct "Type", Performance ("kW"), continue with the instructions as per section 3.4 below.

If the engine's type plate shows either incorrect "Type" and/or Performance ("kW"), contact your nearest ROTAX® Authorized Distributor or their independent Service Centers for a replacement engine type plate and install as per section 3.2.

3.2) Engine type plate replacement

NOTE: Before accomplishment, review the entire documentation to make sure you have a complete understanding of the procedure and requirements.

NOTICE Take care not to damage ignition housing, trigger coil wiring or any other engine or airframe components while performing this work.

3.2.1) Engine type plate removal

See Fig. 2.

The following figures show an engine type plate for demonstration purpose only.

Step	Procedure
1	Remove the negative terminal of the battery.
2	Carefully move the ignition pickup and generator shielded wire bundles (A) so that you have full access to the engine type plate and attachment pins. NOTE: Depending upon aircraft installation, other items may need to be moved for access.

d06580.fm

SERVICE BULLETIN

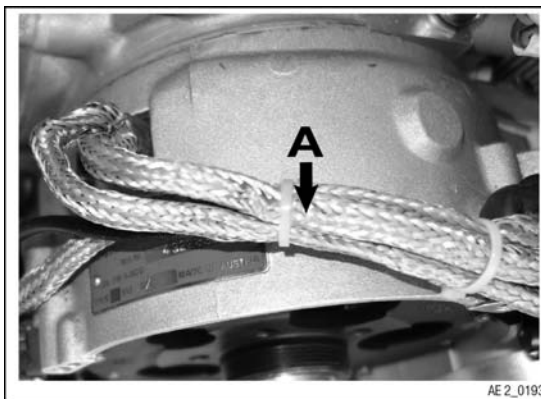


Fig. 2
Generator wire bundles

See Fig. 3.

Step	Procedure
3	Use a chisel and place its flat face against the engine type plate and its edge under one of the grooved pins.
4	Gently work the chisel under the head of the grooved pin by tapping with a hammer. Be very careful not to cut the head of the grooved pin.



Fig. 3
Remove of the grooved pin

See Fig. 4.

Step	Procedure
5	Use the chisel to pry the grooved pin out of the ignition housing.
6	Repeat steps 3 to 5 for the second grooved pin.

d06580.fm

SERVICE BULLETIN

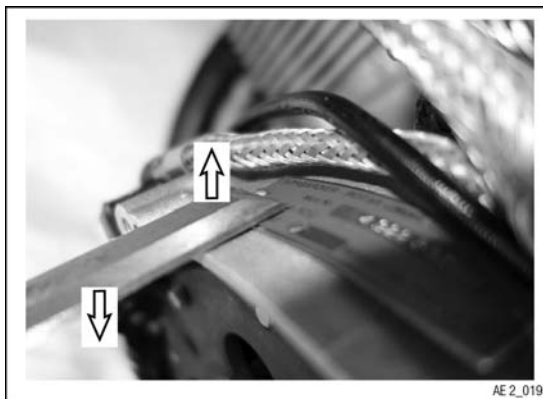


Fig. 4
Removal of the grooved pin

3.2.2) Engine type plate installation

NOTE: Always install with new grooved pins.

Step	Procedure
1	Align the hole on the right of the new type plate with the hole in the ignition housing.



Fig. 5
New engine type plate with pin

10232

See Fig. 6.

Step	Procedure
2	Place a new grooved pin (1) (part no. 249071) into the hole.
3	Gently hammer the grooved pin into the ignition housing. Be careful to keep the grooved pin perpendicular to the ignition housing.

d06580.fm

SERVICE BULLETIN

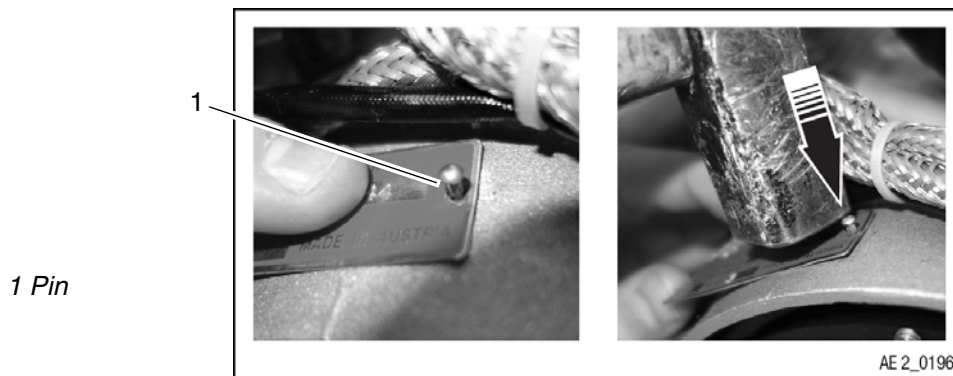


Fig. 6
Installation of the engine type plate

See Fig. 7.

Step	Procedure
4	Before the first grooved pin is fully inserted, put the second grooved pin into place and gently hammer it into ignition housing.

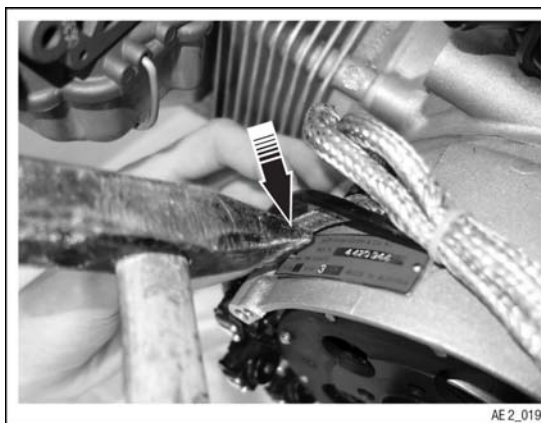


Fig. 7
Installation of the engine type plate

NOTICE

To allow access for grooved pin installation, the removal of the carburetor from cylinder side 2/4 may be necessary. Pay attention to carburetor removal and installation instructions in the Maintenance Manual Heavy (MMH) chapter 73-00-00 "Fuel system".

d06580.fm

SERVICE BULLETIN

Step	Procedure
5	Place all wiring back into its original location and replace any tie wraps or other items removed during maintenance.

- Restore aircraft to original operating configuration.
- Connect negative terminal of aircraft battery.

3.3) Test run

Conduct test run. See chapter 12-20-00 of the latest Maintenance Manual Line for the respective engine type.

3.4) Summary

These instructions (section 3) have to be followed in accordance with the deadlines specified in section 1.5.

The execution of the mandatory Service Bulletin must be confirmed in the logbook.

I A revision bar outside of the page margin indicates a change to text or graphic.

Translation into other languages might be performed in the course of language localization but does not lie within ROTAX' scope of responsibility.

In any case the original text in English language and the metric units are authoritative.

3.5) Inquiries

Inquiries regarding this Service Bulletin should be sent to the ROTAX® Authorized Distributor of your area.

A list of all ROTAX® Authorized Distributors or their independent Service Centers is provided on www.flyrotax.com.

- NOTE: Section 1.6) Approval: Is not required for engines of the type UL.
Section 3) Accomplishment: In addition: persons with adequate type-specific training.
- NOTE: The illustrations in this document show the typical construction. They may not represent full detail or the exact shape of the parts which have the same or similar function.
Exploded views are **not technical drawings** and are for reference only. For specific detail, refer to the current documents of the respective engine type.